

Product Overview

Pointools View Pro™ is the point cloud collaboration software for viewing and reviewing the largest point cloud models from every 3D laser scanner.

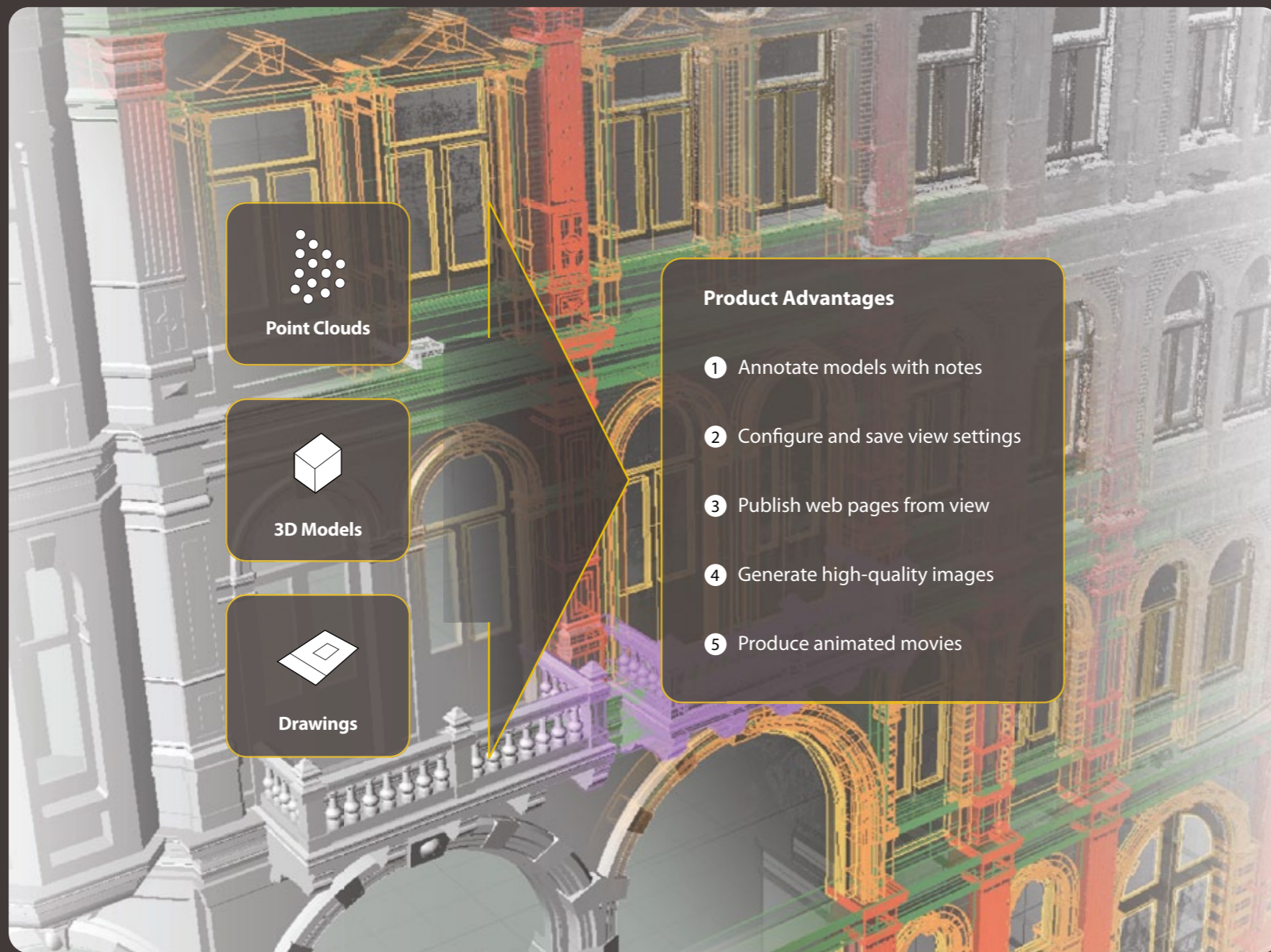
Powered by Pointools Vortex™ – the industry's leading point cloud visualization engine, Pointools View Pro can open 2D and 3D models and manipulate billions of points with ease. Add in versatile tools for annotation, generating images, and producing animation, and Pointools View Pro makes it easy to collaborate with all stakeholders.



Pointools Notes

Project	C:\3d_data\altenburg_w_notes.ptd
Date	2006-Nov-06

Caption	Note
Painted Dome	Painted dome by unknown artist
Elaborate moulding	[empty]
Books	[empty]
Guided Column head	[empty]



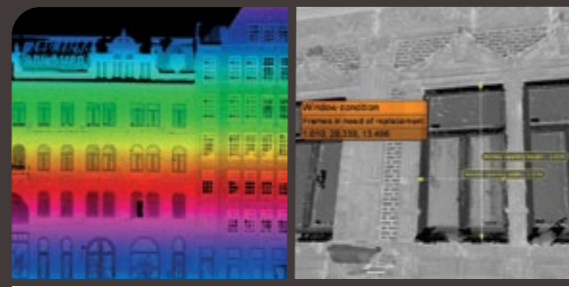
Point Clouds

3D Models

Drawings

Product Advantages

- 1 Annotate models with notes
- 2 Configure and save view settings
- 3 Publish web pages from view
- 4 Generate high-quality images
- 5 Produce animated movies



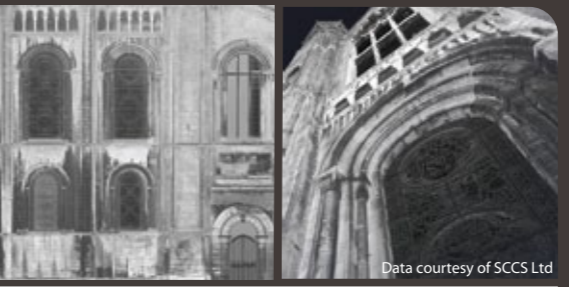
Speed-up Collaborative Workflows

Annotate models with notes and dimensions, and configure and save view and shader settings to improve knowledge transfer and accelerate collaboration.



Reduce cost of information sharing

Publish web pages from view including all annotations to streamline model publishing and reduce the cost of information sharing with all stakeholders.



Increase the quality of deliverables

Generate orthographic and perspective images, and produce professional-quality animations that are compatible with 3D Studio MAX, Maya, & Lightwave.

Pointools View Pro plug-in for Rhino
 Pointools Edit plug-in for AutoCAD
 Pointools POD Creator plug-in for SketchUp
 Pointools View Pro plug-in for SketchUp

Product Specification

3D Model Aggregation

- View point clouds, 3D models, & 2D drawings together

Large Point Cloud Support

- Handles large datasets with billions of points
- Manage scene parameters interactively
- Load and unload POD models fast

High Performance Graphics

- Multi-threaded for high-performance display
- Uses high-density, low decimation Vortex display engine
- Stream point cloud model display in real time
- Control point cloud density with interactive slider

Data Interoperability

- Store points in POD models for broad reuse
- Efficient accuracy based compressed file format
- Create POD models from large range of scanners incl: Faro, TopCon, Leica, Optech, Riegl, Trimble, Z+F
- Supported scan data formats include: Ascii XYZ/TXT, FLS/FWS, LAS, PTX/PTS/PTZ/PTG, IXF, 3DD/RSP/RXP/RDP, CL3, Terrascan BIN, Kubit PTC

Application Interoperability

- Integration with 2007 - 2011 Autodesk apps incl: AutoCAD, Civil 3D, Architecture, Map 3D, Land Desktop
- Integration with broad portfolio of Bentley apps incl: MicroStation, OpenPlant, InRoads, RailTrack, GEOPAK, Bentley Map, Navigator
- Integration with Rhino + Google SketchUp

Model Shaders

- Shade points by intensity and RGB colour
- Shade points by defining distances from a plane
- Blend all shading settings for maximum impact

Georeference Support

- Works across all Pointools enabled applications

Review Tools

- Sketch on top of view with pen for presentations
- Measurements via point to point or single point
- Annotate project with notes attached to objects
- Output coded measurements and notes to text file

Image Generator

- Produce high-resolution ortho & perspective images
- Define rulers and grid lines
- Output scale and datum for accurate reuse

Animation Producer

- Easy to use timeline-based animation system
- Animate flight path, objects, lighting, & clip region
- Render as .jpg, .tif, .tga, .avi, or .mov movie file
- Render depth and alpha buffers for compositing
- Anti-aliased rendering & motion-blur for superior quality
- Import/export camera paths to/from 3D design apps

About Pointools

The Pointools suite of software leverages the high-performance Pointools POD format for working with the largest point cloud models inside the broadest range of applications. Used by architects, engineers, contractors, and surveyors to work with 3D laser scan data, Pointools software supports multiple workflows including Art & Entertainment, Forensics, GIS & Mapping,

Infrastructure, Manufacturing, and Security & Defence. Pointools offerings include stand-alone applications, CAD software plug-ins, and a third-party development platform for point cloud processing and visualisation; uniquely enabling point cloud model reuse across Bentley, Autodesk, Rhino, and SketchUp applications without time-consuming translation.

Product Portfolio	Pointools Apps	Pointools Plug-ins	Pointools Platform
Capabilities	Pointools Edit™ Pointools View Pro™ POD Creator™	Rhino® AutoCAD® Civil 3D® Architecture® Map 3D® Land Desktop® SketchUp®	MicroStation® OpenPlant® InRoads® Bentley RailTrack® GEPAX® Bentley Map® Navigator®
3D Model Aggregation	● ● ○	○ ○ ○ ○ ○ ○ ○	● ● ● ● ● ● ●
Large Point Cloud Support	● ● ○	● ● ● ● ● ● ●	● ● ● ● ● ● ●
High Performance Graphics	● ●	● ● ● ● ● ● ●	● ● ● ● ● ● ●
Data Interoperability	● ● ○	○ ¹ ○ ¹ ○ ¹ ○ ¹ ○ ¹ ○ ¹ ○ ¹	● ● ● ● ● ● ●
Application Interoperability	○ ² ○ ²	○ ○ ○ ○ ○ ○ ○	○ ○ ○ ○ ○ ○ ○
View Configuration	● ●	○ ○ ○ ○ ○ ○ ○	○ ○ ○ ○ ○ ○ ○
Model Shaders	● ●	● ● ● ● ● ● ●	● ● ● ● ● ● ●
Georeference Support	● ○	○ ○ ● ○ ● ○ ○	● ● ● ● ● ● ●
Productivity Settings	● ○	○ ○ ○ ○ ○ ○ ○	○ ○ ○ ○ ○ ○ ○
Review Tools	● ●	○ ○ ○ ○ ○ ○ ○	○ ○ ○ ○ ○ ○ ●
Image Generator	● ●	○ ○ ○ ○ ○ ○ ○	● ● ● ● ● ● ●
Animation Producer	● ●	○ ³ ○ ³ ○ ³ ○ ³ ○ ³ ○ ³ ○ ³	○ ³ ○ ³ ○ ³ ○ ³ ○ ³ ○ ³ ○ ³
Geometry Creation		● ● ● ● ● ● ●	
Point Editing	●		
Point Painting	●		
Point Segmentation	●		
Batch Import			● ● ● ● ● ● ●

Pointools reserve the right to change this specification without notice.

1= Requires Pointools POD Creator 2= Interoperates with same Pointools POD model 3= Leverages host application rendering and animation capabilities

